



## Policy for:

# Whistleblowing

		Date	Change Log	
<b>Reviewed by:</b>	SBM	June 2025	Reviewed, no change	
<b>Authorised by:</b>	F&P	Summer 2025		
<b>Date for next review:</b> (or earlier should legislation require it)	Summer 2026			



## Our Christian Vision & Values

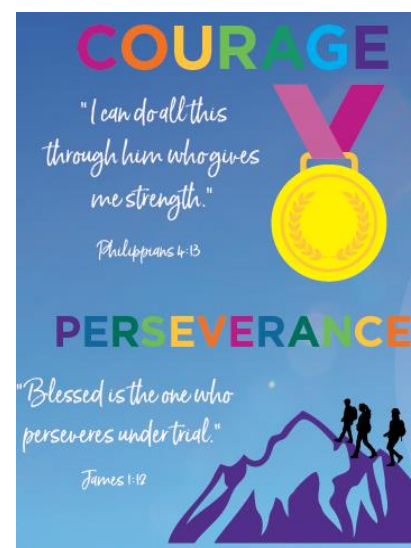
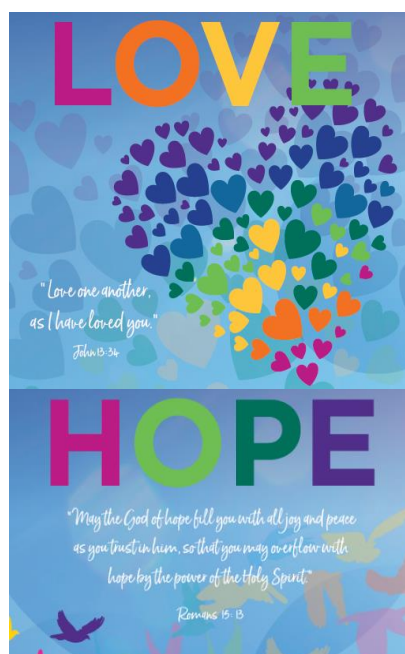
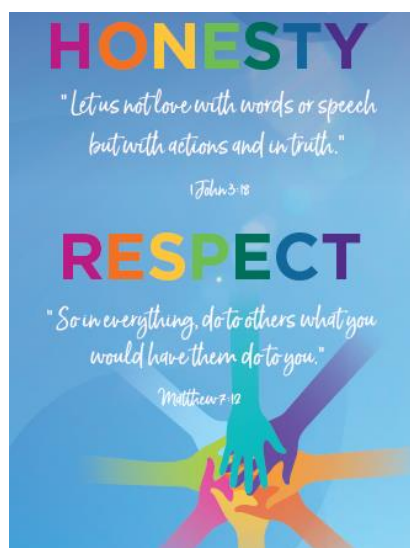


### Our Christian vision states that we:

Clear a path for a lifelong journey of exploration and growth, through an innovative and challenging curriculum, inspiring all in our community to be courageous advocates and global citizens. Everyone can find their light and shine it brightly. Hand in hand, we love, learn and flourish together.

*'In the same way, let your light shine before others, so that they may see your good works and give glory to your Father who is in heaven.'* 'Let your light shine' Matthew 5:16

### Our core Christian values allow us to deliver the Christian vision:





## Whistleblowing

### Introduction

All schools are required to have appropriate procedures in place for handling whistleblowing and for ensuring school staff know who they can contact if they wish to raise a concern.

This document explains the types of concerns that can be raised under this procedure, the legal protection for whistleblowers and how whistleblowing concerns will be handled.

This procedure should be followed for any whistleblowing matters raised by employees of the school, supply staff and agency workers.

The term 'Headteacher' has been used throughout this procedure, however depending on the size and structure of the school the head teacher's role in the procedure may be delegated to other members of the senior leadership team, school business managers or line managers as appropriate. Where the head teacher is subject to these procedures, it will be managed by the Chair of the Governing Body.

The Governing Body of Woodstock CE Primary School has adopted the model Whistle Blowing Procedures of the County Council for Oxfordshire School.

### Policy Statement

The school is committed to the highest possible standards of:

- Openness and inclusiveness
- Accountability
- Integrity

### Aim of Procedure

- To encourage those working in the school to report suspected wrongdoing promptly, in the knowledge that it will be taken seriously.
- To provide guidance on how to raise concerns.
- To reassure staff that they are able to raise genuine concerns made in the public interest without fear of reprisals, even if they turn out to be mistaken.

### What is Whistleblowing?

- Whistleblowing is when a worker reports certain types of wrongdoing or misconduct within an organisation.
- The wrongdoing disclosed must be in the public interest. This means it must affect others, for example pupils, general public.
- The wrongdoing must relate to or show one of the following:
  - A criminal offence

- A failure to comply with a legal obligation
  - A possible miscarriage of justice
  - A Health & Safety risk
  - Damaging the environment
  - Misuse of public money
  - Corruption or unethical conduct
  - Abuse of pupils, students or other users
  - Deliberate concealment of any of these matters
  - Any other substantial and relevant concern.
- The concern could be about something that happened in the past, is currently happening or likely to happen in the future.
  - Concerns or complaints that employees wish to raise formally, about their own employment, should normally be raised using the school's Grievance Procedure, unless the employee believes the concern is in the public interest. This includes for example, concerns related to working conditions, working relations, employment rights or bullying or harassment.

### **Legal protection for whistleblowers**

- Whistleblowers are protected by law from being treated unfairly or losing their jobs because they 'blow the whistle'.
- Whistleblowers must hold a reasonable belief that the concern they are raising is in the public interest.
- The school's governing body will provide all reasonable protection for those who raise concerns made in the public interest.
- The school's governing body will be responsible for ensuring that appropriate personal support is offered both to a worker raising a concern and to any worker against whom allegations have been made under this procedure.
- Although an employee has certain legal obligations of confidentiality to the school, in a limited set of circumstances, whistleblowing may override these obligations. This guidance sets out the circumstances under which these disclosures may lawfully be made.

### **Procedure for raising a whistleblowing concern**

#### **Whistleblowing anonymously or confidentially**

- Concerns can be raised anonymously, but the school or person receiving the allegation may not be able to take it further if they haven't been provided with all the information they need.
- Whistleblowers can give their name but request confidentiality and in these circumstances, every effort will be made to protect their identity.
- All disclosures made under this procedure will be treated sensitively, consistently and fairly.

### **Step 1 - Deciding who to report the concern to**

- Concerns can be raised verbally or in writing.
- You can raise your concern with your line manager. Alternatively, you can raise the matter with the Headteacher or the Chair of Governors.

- If you wish to report the matter to someone outside of the school, you can contact the Director of Children's Services, Oxfordshire County Council or any of the other local authority officers listed in Annex 1 or one of the external bodies/organisations listed in Annex 2.
- Reporting concerns to the media, in most cases will lead to the loss of your whistleblowing law rights.
- Although you are not expected to prove beyond doubt the truth of your concerns, you will need to demonstrate that you have sufficient evidence or other reasonable grounds to raise them.
- You may wish to obtain advice from a trade union representative, the Citizen's Advice Bureau or Public Concern at Work on 020 7404 6609 and [www.pcaw.co.uk](http://www.pcaw.co.uk) .
- You can be accompanied by a trade union representative or colleague to any meetings that are required.

## Step 2

- The person, with whom you have raised your concern, will decide what action is needed. They may ask you to provide further information. They will write to you within 10 days to let you know how your concern will be dealt with.

The information you can expect to receive is:

- An indication of how the concern will be dealt with
  - An estimate of how long it will take to provide a final response
  - Whether any initial enquiries have been made
  - Whether further investigations will take place, and if not why not
  - Information about support available for you.
- The person with whom you have raised your concern will at the same time notify the schools' HR Adviser that a whistleblowing allegation has been made.
  - Advice on dealing with concerns is available from the school's HR Adviser, legal or financial adviser.

## Step 3

- Initial enquiries will be made to decide whether an investigation is appropriate.
- An investigation may be carried out, depending on the nature of the allegations and the evidence/information presented. Full details of the investigation may be withheld from you to protect the confidentiality of other people.
- Information will need to be passed on to those with a legitimate need to have this information and it may be necessary for you to provide a written statement and act as a witness in any subsequent disciplinary proceedings or enquiry. This will be discussed with you first.

Where an investigation is necessary, it may take the form of one or more of the following:

- An internal investigation by the head teacher or a governor, which may, for example, take the form of a disciplinary investigation
- An investigation by the Internal Audit Service
- A referral to the Police
- The setting up of an external independent inquiry

## Step 4

- You will be informed of the outcome of any investigation, in writing, and/or of any action taken, subject to the constraints of confidentiality and the law.

If you do not feel your concern has been addressed adequately, you may raise it with an independent body such as one of the following as appropriate:

- Your trade union
- The Citizens Advice Bureau
- A relevant professional body or regulatory organisation
- A relevant voluntary organisation
- The Police
- The Local Government Ombudsman
- Equality and Human Rights Commission

(See Annex 2 for further details)

- If there is an issue of an exceptionally serious nature that you believe to be substantially true, then you may disclose the issue to someone other than those listed in step 1. In determining whether it is reasonable for you to have made a disclosure the identity of the person to whom the disclosure is made will be taken into account. Disclosures to anyone outside of the recognised bodies listed in step 4 and Annex 1 and 2 may not be protected disclosures under the Act.
- You have a duty to the school not to disclose confidential information. This does not prevent you from seeking independent advice at any stage or from discussing the issue with the charity Protect (previously called Public Concern at Work) on 020 3117 2520 or [www.protect-advice.org.uk](http://www.protect-advice.org.uk) in accordance with the provisions of the Public Interest Disclosure Act 1998.

## **Review and Reporting of the Procedure**

- For maintained and voluntary controlled schools Oxfordshire County Council's Head of Paid Service, and the Council's Monitoring Officer, have overall responsibility for this procedure.
- This procedure has been reviewed with reference to equalities, human rights and discrimination legislation. Confidential monitoring of the procedures is undertaken in order to gather data to help establish whether the procedure is operated in a fair and consistent manner. In undertaking monitoring the school will not identify individuals.
- This procedure will be regularly reviewed by the Monitoring Officer to ensure that it continues to remain compliant and meets the needs of Schools and those working in schools.

**Annex 1 - Contact list for Oxfordshire County Council**

Address: Oxfordshire County Council, County Hall, New Road, Oxford, OX1 1ND

Education Personnel Service - Professional HR Advice for Schools	<a href="mailto:Eps.consultants@hants.gov.uk">Eps.consultants@hants.gov.uk</a> 02380 383500
Local Authority Designated Officer for Safeguarding Children	<a href="mailto:Jo.Lloyd@oxfordshire.gov.uk">Jo.Lloyd@oxfordshire.gov.uk</a> 01865 815956
Health and Safety Team for Schools	<a href="mailto:healthandsafetyhelp@oxfordshire.gov.uk">healthandsafetyhelp@oxfordshire.gov.uk</a> 03300 240849
Director of Finance	<a href="mailto:lorna.baxter@Oxfordshire.gov.uk">lorna.baxter@Oxfordshire.gov.uk</a> 07393 001218
Chief Internal Auditor	<a href="mailto:sarah.cox@oxfordshire.gov.uk">sarah.cox@oxfordshire.gov.uk</a> 07393 001246
Corporate Director for Children Services	<a href="mailto:Kevin.gordon@oxfordshire.gov.uk">Kevin.gordon@oxfordshire.gov.uk</a>
HR Business Partner for Children Services (Interim)	<a href="mailto:Vaishali.baxi-varma@oxfordshire.gov.uk">Vaishali.baxi-varma@oxfordshire.gov.uk</a> 07827 979201
Chief Executive and Head of Paid Service	<a href="mailto:yvonne.rees@oxfordshire.gov.uk">yvonne.rees@oxfordshire.gov.uk</a> 01865 323907
Corporate Director – Commercial Development Assets and Investment and Interim Monitoring Officer	<a href="mailto:Steve.jorden@oxfordshire.gov.uk">Steve.jorden@oxfordshire.gov.uk</a>
Corporate Director for Adult and Housing Services	<a href="mailto:Stephen.chandler@oxfordshire.gov.uk">Stephen.chandler@oxfordshire.gov.uk</a>
Corporate Director for Public Health and Wellbeing	<a href="mailto:Ansaf.azhar@oxfordshire.gov.uk">Ansaf.azhar@oxfordshire.gov.uk</a>
Corporate Director for Community Operations	<a href="mailto:Jason.russell@oxfordshire.gov.uk">Jason.russell@oxfordshire.gov.uk</a>
Corporate Director for Place and Growth	<a href="mailto:Paul.feehily@oxfordshire.gov.uk">Paul.feehily@oxfordshire.gov.uk</a>
Corporate Director for Customers and Organisational Development	<a href="mailto:Claire.Taylor@oxfordshire.gov.uk">Claire.Taylor@oxfordshire.gov.uk</a>
Your local Councillors (if you live in Oxfordshire)	Web site: <a href="http://www.oxfordshire.gov.uk">www.oxfordshire.gov.uk</a> Click on: council services>about your council>councillors

## Annex 2 - External bodies and organisations

You can blow the whistle to an external organisation rather than your employer. There is a list of prescribed people or bodies that you can go to. Choose the correct one for your issue. A full list can be found online at Gov.Uk: <https://www.gov.uk/government/publications/blowing-the-whistle-list-of-prescribed-people-and-bodies--2/whistleblowing-list-of-prescribed-people-and-bodies>

### Some of the bodies that may be relevant for schools' staff are:

Ofsted	WBHL, Ofsted, Piccadilly Gate, Store Street, Manchester, M1 2WD Tel: 0300 123 3155 Email: <a href="mailto:whistleblowing@ofsted.gov.uk">whistleblowing@ofsted.gov.uk</a>
Office of Qualifications and Examinations Regulation	Complaints Investigation Manager, Ofqual, Earlsdon Park, 53-55 Butts Road, Coventry, CV1 3BH. Tel: 0300 303 3344 <a href="mailto:whistleblowing@ofqual.gov.uk">whistleblowing@ofqual.gov.uk</a> Online reform form: <a href="http://www.ofqual.gov.uk/complaints-and-appeals/whistleblowing/">www.ofqual.gov.uk/complaints-and-appeals/whistleblowing/</a>
National Society for the Prevention of Cruelty to Children (NSPCC)	The NSPCC Whistleblowing Advice Line is for anyone with child protection concerns in the workplace. The helpline provides support and advice to those who feel unable to get a child protection issue addressed by their employer. It can be contacted anonymously on 0800 028 0285.
Health and Safety Executive	Tel: 0300 790 6787 <a href="http://www.hse.gov.uk">www.hse.gov.uk</a>
The Local Government Ombudsman	Address: PO Box 4771, Coventry. CV4 0EH <a href="http://www.lgo.org.uk">www.lgo.org.uk</a> Tel: 0300 061 0614
Data Protection and Freedom of Information	The Office of the Information Commissioner, Wycliffe House, Water Lane, Wilmslow, SK9 5AF Tel: 0303 123 1113